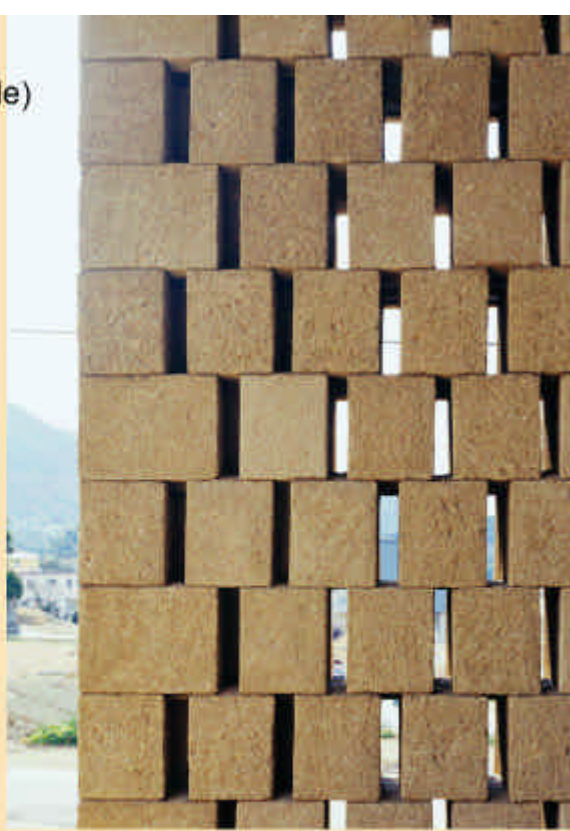


Adobe Repository for Buddha Statue (Anyoji Temple)

2002

Kengo Kuma & Associates

Toyoura Shimonoseki-city Yamaguchi-prefecture



The wooden Buddha in this warehouse is one of the National Designated Important Cultural Assets.

This warehouse enables us to see the Buddha through glass on one side, and other three sides are made of adobe from the local soil.

"Self-production and self-consumption" is a valuable factor for sustainable architecture.

It is both cost and energy efficient.

Also, this burned brick wall controls temperature and humidity of the property, so air-conditioning units aren't necessary in this facility.

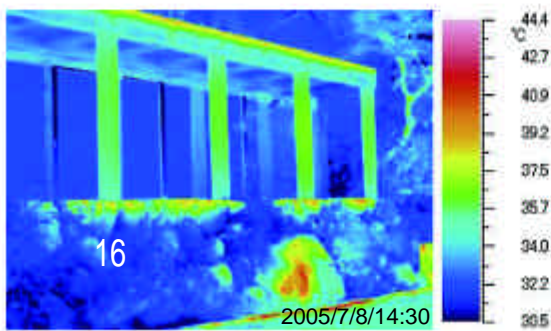


Morihana Memorial House

1962

Kiyoshi Seike

Kobe-city Hyogo-prefecture



As you can see from the picture, the greeneries covering the building and the eaves restrains the increase of the surface temperature and produces cool and comfortable climate even in a boiling hot day. The solid and strong design of the structure made by natural stones deepens its beauty as time passes.